

A nighttime photograph of a city skyline with several illuminated skyscrapers. In the foreground, a large billboard is suspended over a body of water. The billboard has a white background with an orange rectangular section on the left containing the text 'BESPOKE STAND PACKAGES'. To the right of this section, the text 'DESIGNED AND BUILT EXPO STANDS' is written in a bold, dark blue font. Below this, two paragraphs of text describe the service: 'Cost effective all-inclusive stands that will make your business stand out without the price tag' and 'Packages include: electrics and lighting, signage and graphics, flooring, walls, furniture and plants where specified'. The background image shows a city at night with lights reflecting on the water and a grid pattern overlaid on the entire scene.

BESPOKE STAND PACKAGES

DESIGNED AND BUILT EXPO STANDS

Cost effective all-inclusive stands that will make your business stand out without the price tag

Packages include: electrics and lighting, signage and graphics, flooring, walls, furniture and plants where specified

“Some exhibitors will work their stand while others will have their stand work for them”

A well thought out stand should be inviting, entertaining, educational and memorable.

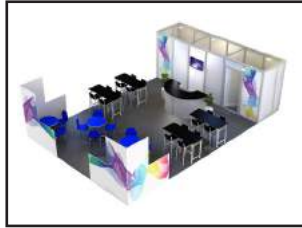
You have between five to seven seconds to capture attention and convey your main message to visitors. It doesn't need to be too complex, but it needs to catch visitor's attention and stop them.

Our bespoke stand packages can provide you with that little edge to make your ROI all that better.





Option 1:
Peninsular Network 6x6



Option 2:
Peninsular Network 9x6



Option 3a:
Peninsular Hospitality 12x6



Option 3b:
Peninsular Hospitality 9x6



Option 4a:
Peninsular Meet & Greet 12x6



Option 4b:
Peninsular Meet & Greet 9x6



Option 4c:
Peninsular Meet & Greet 6x6



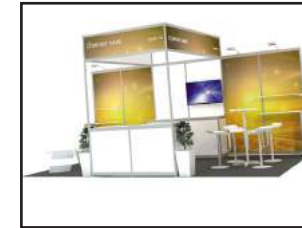
Option 5:
Peninsular Meeting 12x6



Option 6a:
Island Eco 9x6



Option 6b:
Island Eco 6x6



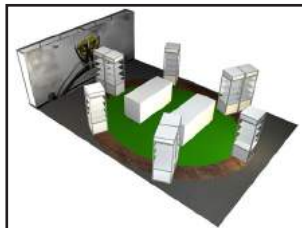
Option 7a:
Peninsular Stand 6x3



Option 7b:
Corner Stand 6x3



Option 8a:
Peninsular Showcase 12x6



Option 8b:
Peninsular Showcase 9x6



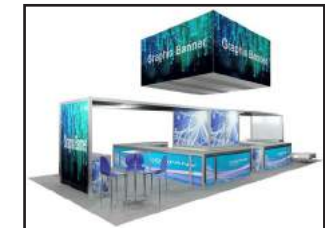
Option 9a:
Island Concierge Open 12x6



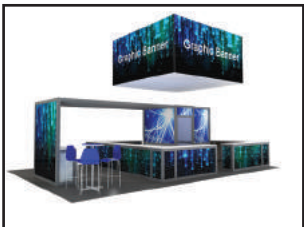
Option 9b:
Island Concierge Open 9x6



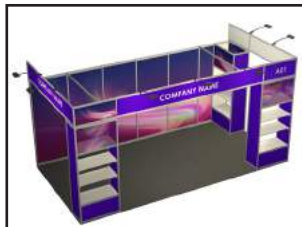
Option 10:
Island Concierge with banners
12x9



Option 11a:
Island Hospitality with banners
12x6



Option 11b:
Island Hospitality with banners
9x6



Option 12a:
Peninsular Display 6x3



Option 12b:
Peninsular Display 9x6



Option 13a:
Corner Stand 3x3



Option 13b:
Inline stand 3x3

BEFORE YOU START!

The objective of all stand design should be to grab the attendees' attention. The design of your stand will reflect directly the image of your product or service. You have 5 – 7 seconds to make an impression as a visitor walks by. **MAKE THEM STOP!**

Your stand should differentiate your company from other exhibitors and demonstrate your Unique Sales Position. Make sure people coming to your stand can experience your product or service. Let them touch, see, feel, hear or taste it.

How do you decide on what are vital elements? First, answer these questions about your company:

Who are you?

What does your company do?

Who are your current clients?

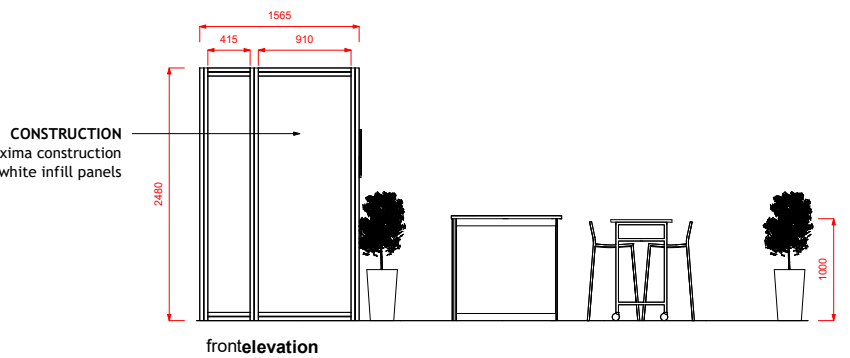
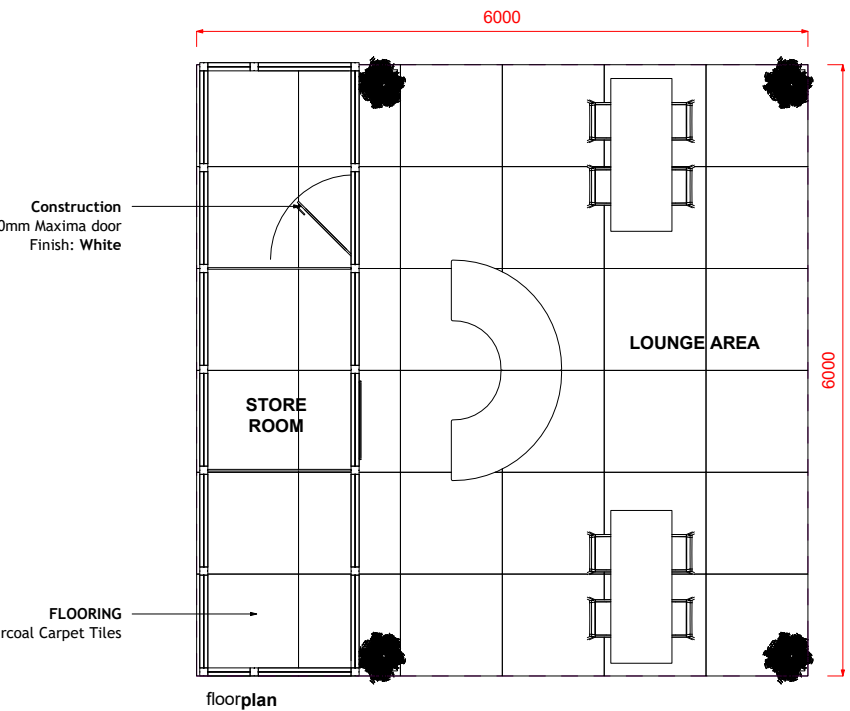
What impression do you want people to have of your company?

Do customers really know what your company does?

Keys to creating a winning theme:

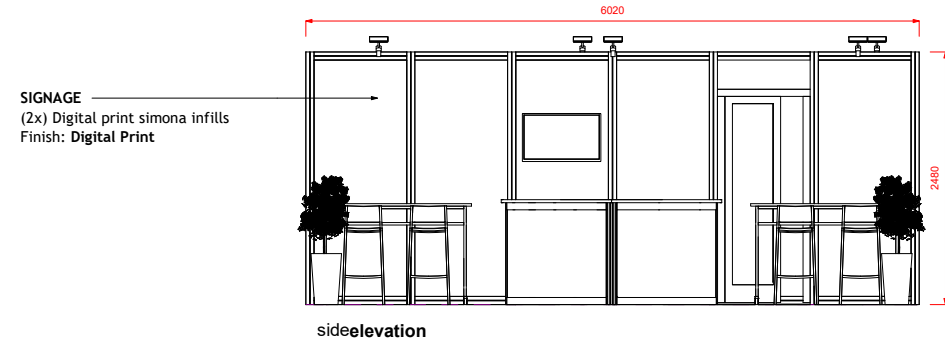
- Make it current and relevant.
- Avoid themes that are cliché.
- Keep it consistent with your corporate personality.
- Play on the show's theme or location.
- KIS – Keep It Simple.
- Aim at an emotional nerve – tap into attendees' memories of childhood for instance, or some great place they might like to be.

Option 1: Peninsular Network 6x6

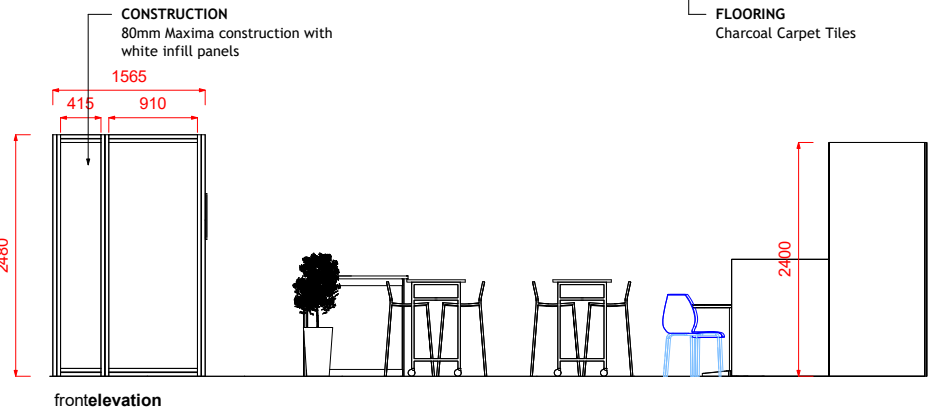
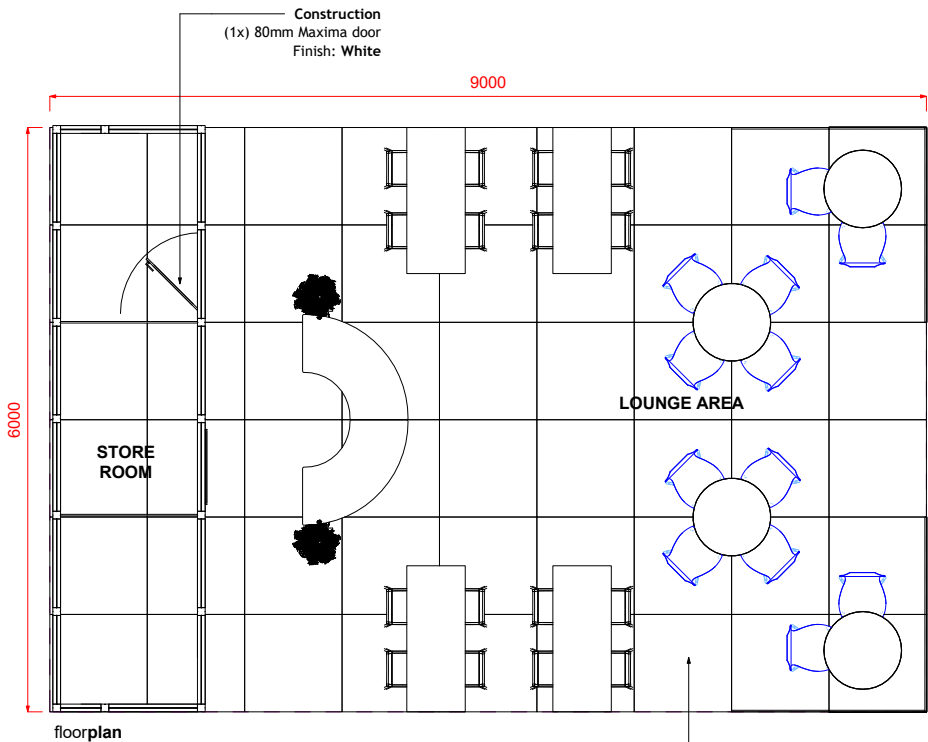


Furniture Schedule	
Description	Count
32" LCD Screen	1
1200mm High Plant w Wedge Pot	4
Euro Registration Counter White	2
Expo Bench Blue	2
Fineline Bar Stool White	8

- Structure including carpet
 - Furniture
 - Electrical
 - Signage
 - Audio Visual
 - Damage Waiver
- = \$6,515 + GST



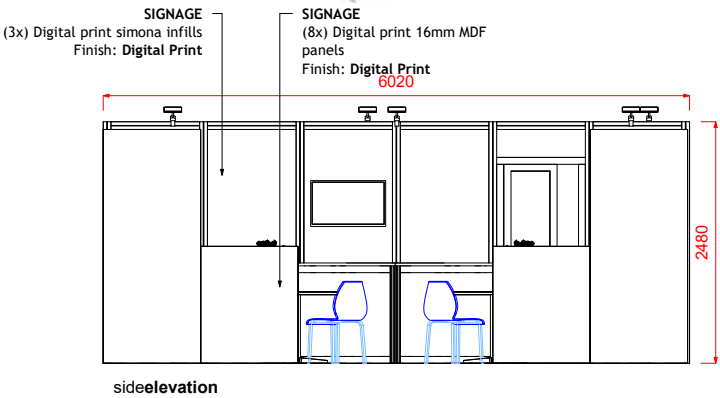
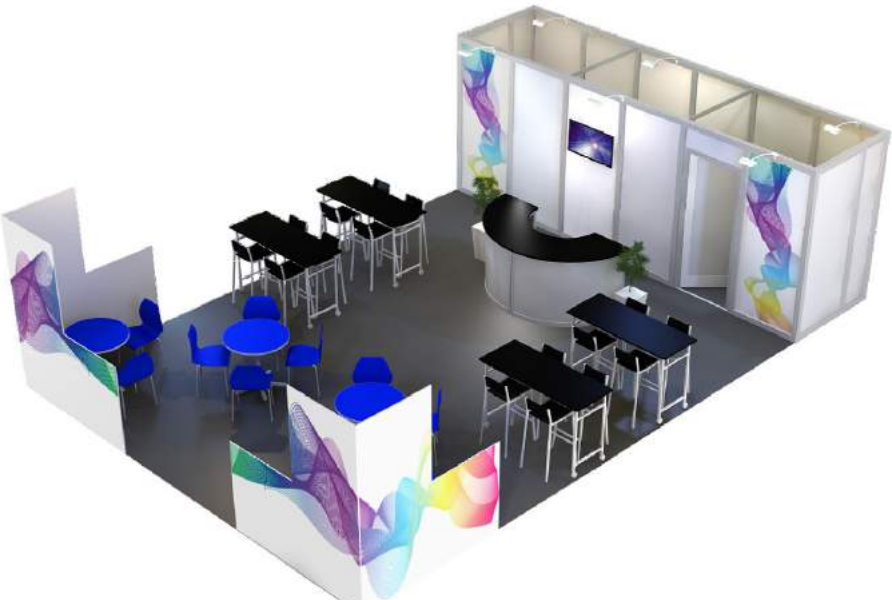
Option 2: Peninsular Network 9x6



Furniture Schedule	
Description	Count
32" LCD Screen	1
1200mm High Plant w Wedge Pot	2
Euro Registration Counter White	2
Expo Bench Black	4
Expo Chair Blue	12
Expo Table Blue	4
Fineline Bar Stool Black	16

- Structure including carpet
 - Furniture
 - Electrical
 - Signage
 - Audio Visual
 - Damage Waiver
- = \$8,500 + GST**

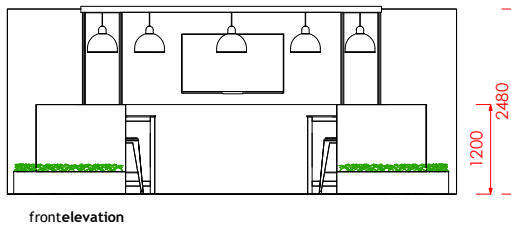
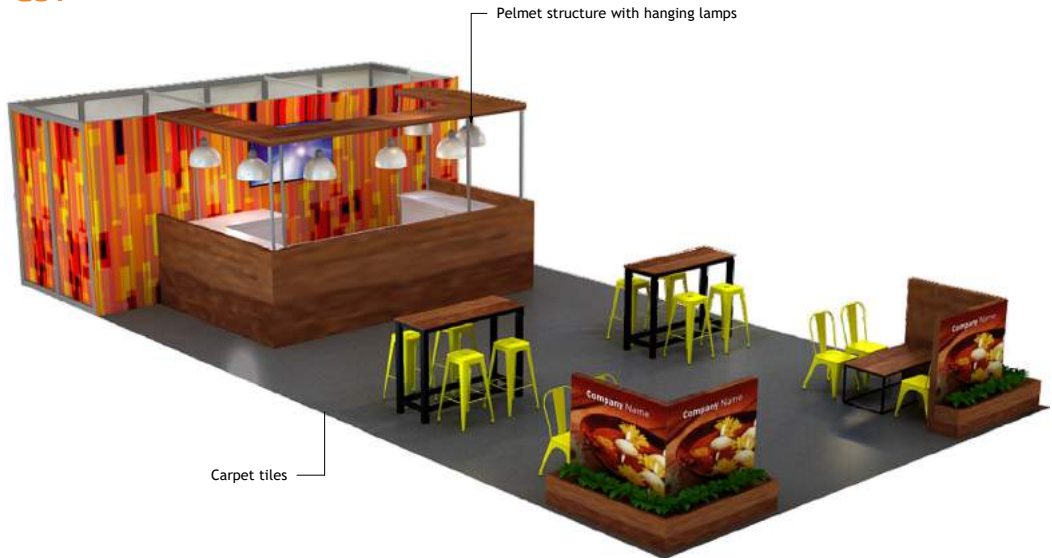
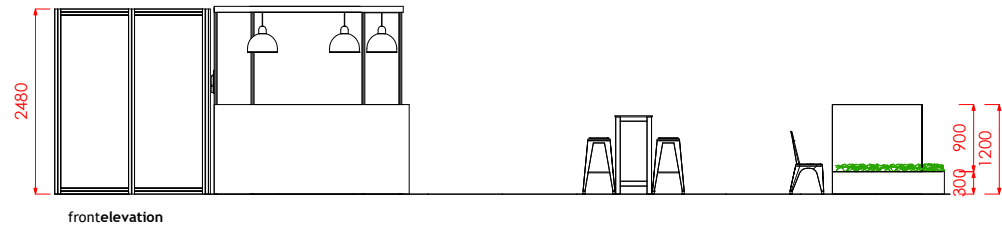
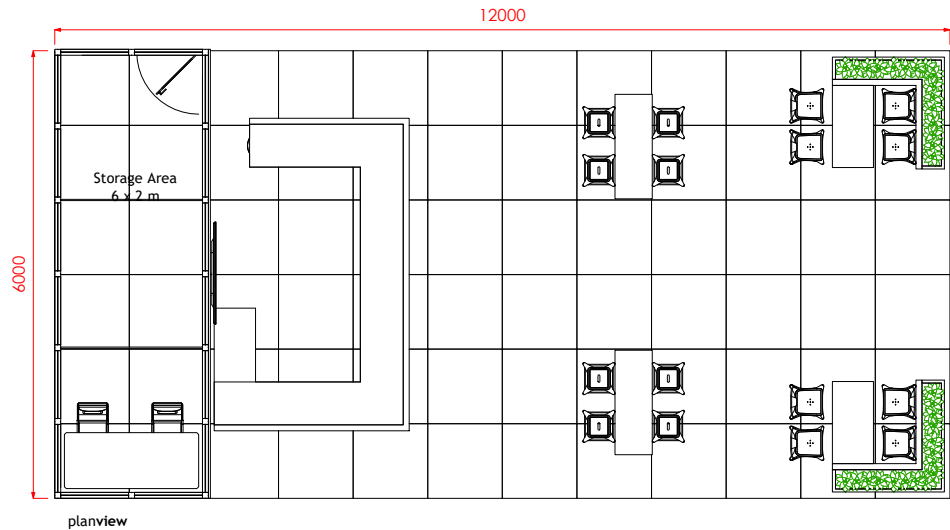
** plants are not included and will be an additional cost*



Option 3a: Peninsular Hospitality 12x6

Furniture Schedule	
Description	Count
60" (152cm) LCD Screen	1
1000mm Planter Box	4
Industrial Bench	2
Industrial Coffee Table	2
Plastic Trestle Table Winter White 1800L	1
Tolix Bar Stool - Gloss Yellow	8
Tolix Chair Yellow	8
Venue Chair Blue	2

- Structure including carpet
 - Furniture
 - Electrical
 - Signage
 - Audio Visual
 - Plants
 - Damage Waiver
- = \$24,550 + GST**



General Walling | Storage area
80mm Maxima system structure with printed PVC & white melamine infills. Include lockable door access.

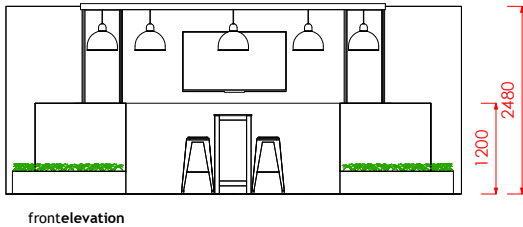
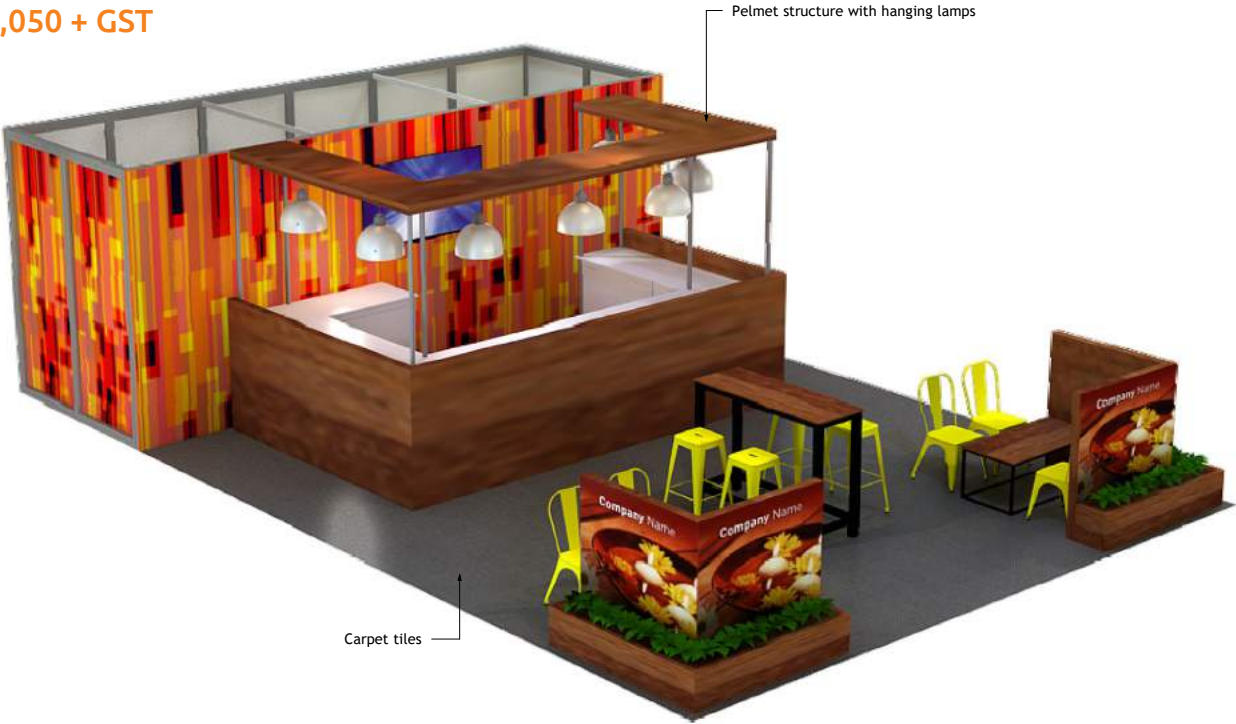
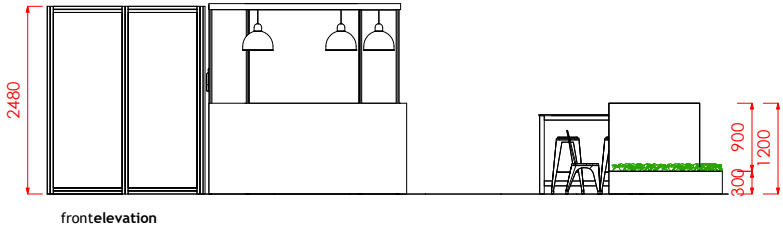
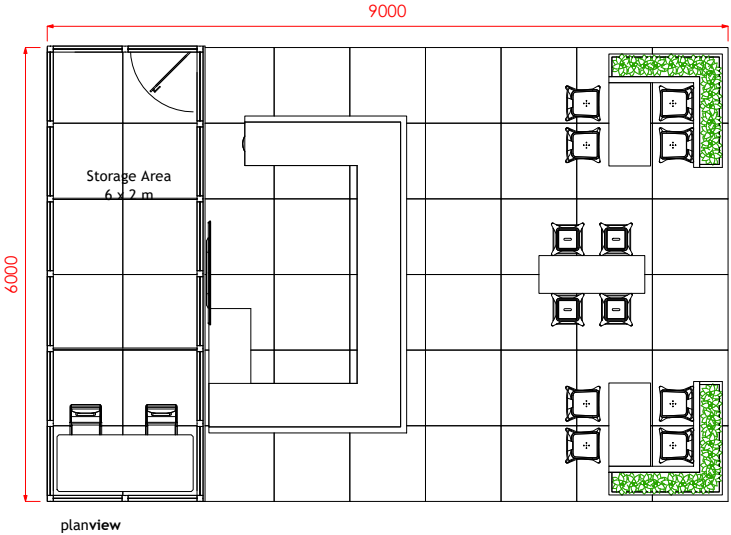
Bar
Octanorm system structure with PVC infills. Include doors under benchtop, 16mm Melamine Benchtop. 8.0 lineal meters x 1200mmH, 80mmD raw timber structure in front of bar.
Overhead 100mmH timber Pelmet, structure with octanorm post 2480mmH, include (6x) hanging lamps

Corner Planter Box
(1x) 1500W x 1500D x 1200mmH, 80mmD raw timber structure. with a 300mmD planter box area and Digital Print on front faces.

Option 3b: Peninsular Hospitality 9x6

Furniture Schedule	
Description	Count
60" (152cm) LCD Screen	1
1000mm Planter Box	4
Industrial Bench	2
Industrial Coffee Table	2
Plastic Trestle Table Winter White 1800L	1
Tolix Bar Stool - Gloss Yellow	8
Tolix Chair Yellow	8
Venue Chair Blue	2

- Structure including carpet
 - Furniture
 - Electrical
 - Signage
 - Audio Visual
 - Plants
 - Damage Waiver
- = \$20,050 + GST



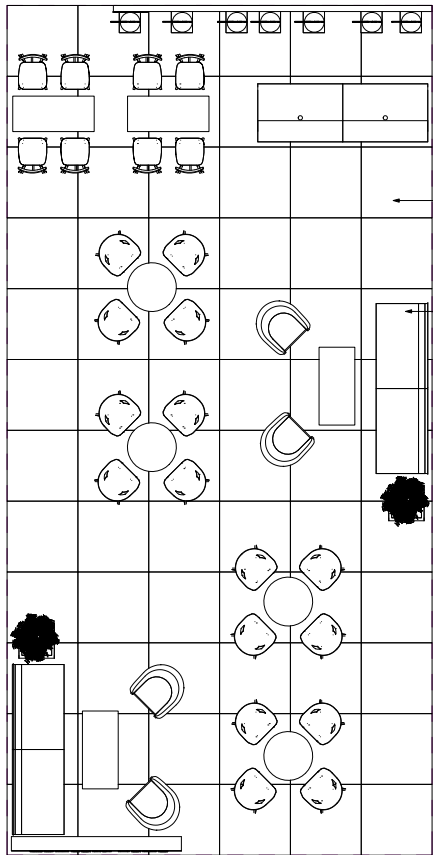
General Walling | Storage area
80mm Maxima system structure with printed PVC & white melamine infills, Include lockable door access.

Bar
Octanorm system structure with PVC infills, Include doors under benchtop, 16mm Melamine Benchtop. 8.0 lineal meters x 1200mmH, 80mmD raw timber structure in front of bar.
Overhead 100mmH timber Pelmet, structure with octanorm post 2480mmH, include (6x) hanging lamps

Corner Planter Box
(1x) 1500W x 1500D x 1200mmh, , 80mmD raw timber structure. with a 300mmD planter box area and Digital Print on front faces.

Option 4a: Peninsular Meet & Greet 12x6

- Structure including carpet
 - Furniture
 - Electrical
 - Signage
 - Plants
 - Damage Waiver
- = \$8,660 + GST



Flooring: Carpet

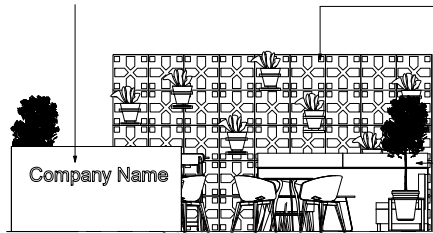
StyleMe Bada Lounges:
MDF body painted white
with back covered in digital
print white subway tiles,
seats covered in raw blue
linen

Plant boxes:
500H x 500W x
500D raw pine
cubed box



UPGRADE OPTION
white or timber raised flooring
additional cost of
\$2,520 + GST

Front wall: 1200H x 2500L
3D lettering
wall face digital print
of white subway tiles



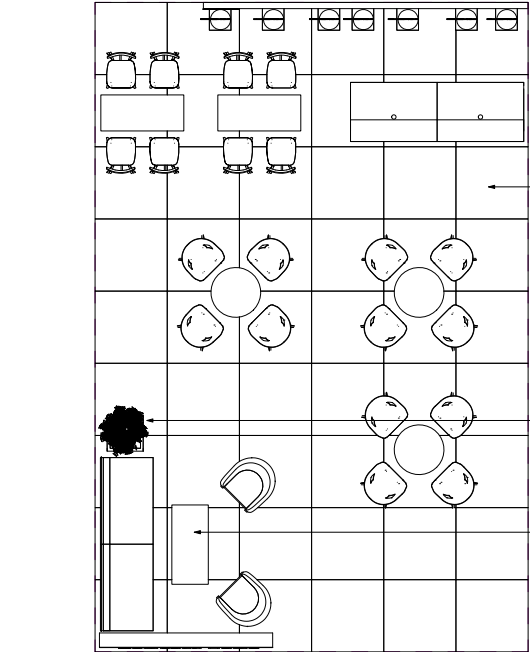
Feature Wall:
2500H x 4500W
Digital print wall

Wall Shelves: 300L x 300D
distressed ply wood

StyleMe straight bar:
front mdf panel digital print of white subway tiles,
top lip painted gloss gold finish

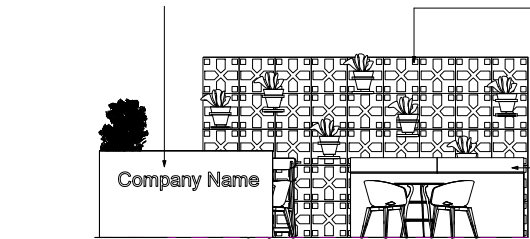
Furniture Schedule	
Description	Count
1800mm High Plant w Plastic Pot	2
Ava Stool	8
Carlo Bimbi Lounge - One Seater	4
Nova Coffee Table - Timber	2
Nova High Table - Timber	2
Provincial Table - White	4
StyleMe Banquet Seat Straight	4
StyleMe Bar Straight Segment 1200W	2
Uni Ka Chair White	16

Option 4b: Peninsular Meet & Greet 9x6



planview

Front wall: 1200H x 2500L
3D lettering
wall face digital print
of white subway tiles



frontelevation

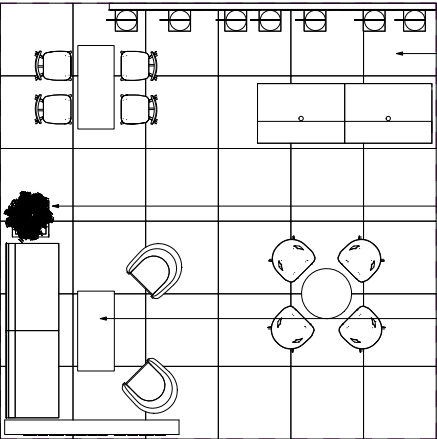
Furniture Schedule	
Description	Count
1800mm High Plant w Plastic Pot	1
Ava Stool	8
Carlo Bimbi Lounge - One Seater	2
Nova Coffee Table - Timber	1
Nova High Table - Timber	2
Provincial Table - White	3
StyleMe Banquet Seat Straight	2
StyleMe Bar Straight Segment 1200W	2
Uni Ka Chair White	12

- Structure including carpet
 - Furniture
 - Electrical
 - Signage
 - Plants
 - Damage Waiver
- = \$7,830+ GST



UPGRADE OPTION
white or timber raised flooring
additional cost of
\$1,890 + GST

Option 4c: Peninsular Meet & Greet 6x6

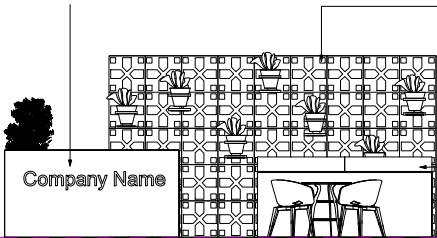


Flooring: Carpet

Plant boxes:
500H x 500W x
500D raw pine
cubed box

StyleMe Bada Lounges:
MDF body painted white
with back covered in digital
print white subway tiles,
seats covered in raw blue
linen

Front wall: 1200H x 2500L
3D lettering
wall face digital print
of white subway tiles



Feature Wall:
2500H x 4500W
Digital print wall

Wall Shelves: 300L x 300D
distressed ply wood

StyleMe straight bar:
front mdf panel digital print of white subway tiles,
top lip painted gloss gold finish

Furniture Schedule	
Description	Count
1800mm High Plant w Plastic Pot	1
Ava Stool	4
Carlo Bimbi Lounge - One Seater	2
Nova Coffee Table - Timber	1
Nova High Table - Timber	1
Provincial Table - White	1
StyleMe Banquet Seat Straight	2
StyleMe Bar Straight Segment 1200W	2
Uni Ka Chair White	4

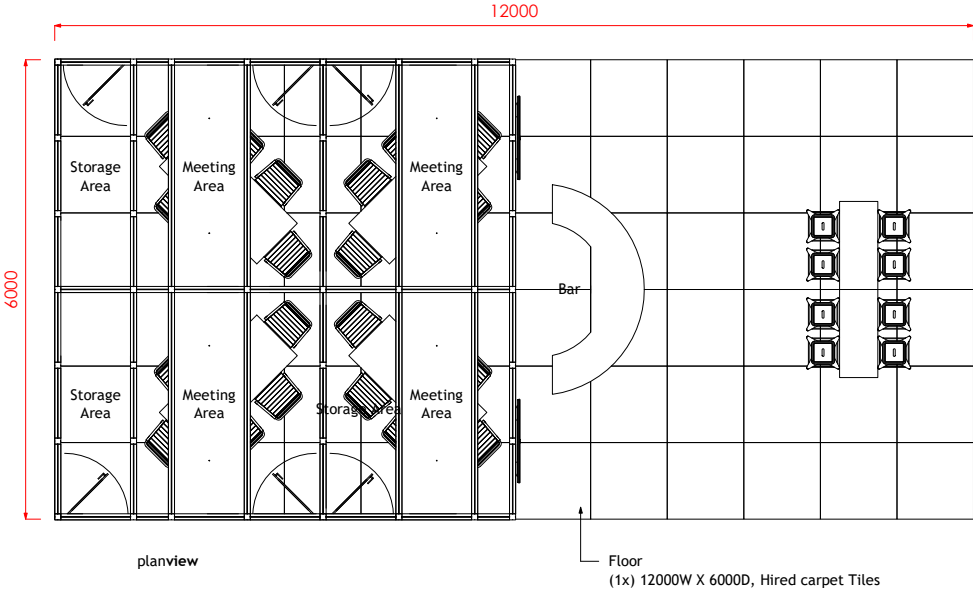
- Structure including carpet
 - Furniture
 - Electrical
 - Signage
 - Plants
 - Damage Waiver
- = \$7,340 + GST**



Option 5: Peninsular Meeting 12x6

Furniture Schedule	
Description	Count
42" LCD Screen	2
Nova High Table - Timber	2
Nova Oblong Table - Black	4
Rocco Visitor Chair Black	24
Tolix Bar Stool - Gloss Black	8

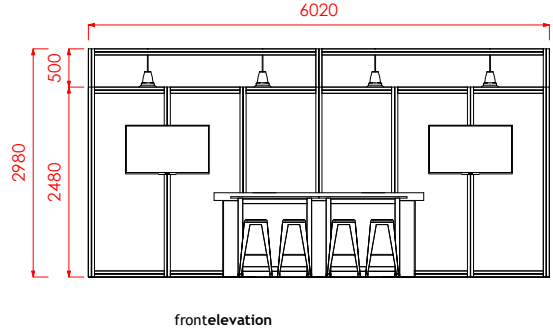
- Structure including carpet
 - Furniture
 - Electrical
 - Signage
 - Audio Visual
 - Damage Waiver
- = \$27,300 + GST



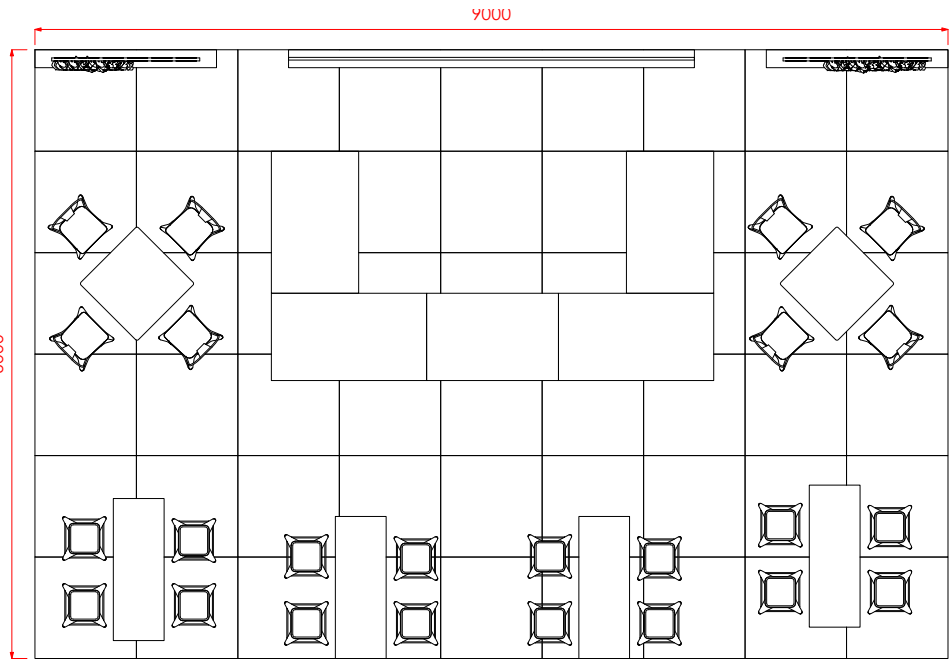
16mm MDF panel as ceiling in VIP Rooms.
(2x) industrial lamps hanging for each room

Bar
2738W x 1200D x 1100mmH, Circular Bar MDF panel construction, 100mmD bottom structure. 100mmH Lip for BenchTop at all edges. Finish: Painted Base & Printed SAV

General Walling | VIP Room & Storage
80mm Maxima system with Printed PVC panels.



Option 6a: Island Eco 9x6



Furniture Schedule	
Description	Count
Industrial Bench	4
Tolix Bar Stool - Timber Seat	16
Tolix Chair with Timber Top	8
Tolix Table Black	2

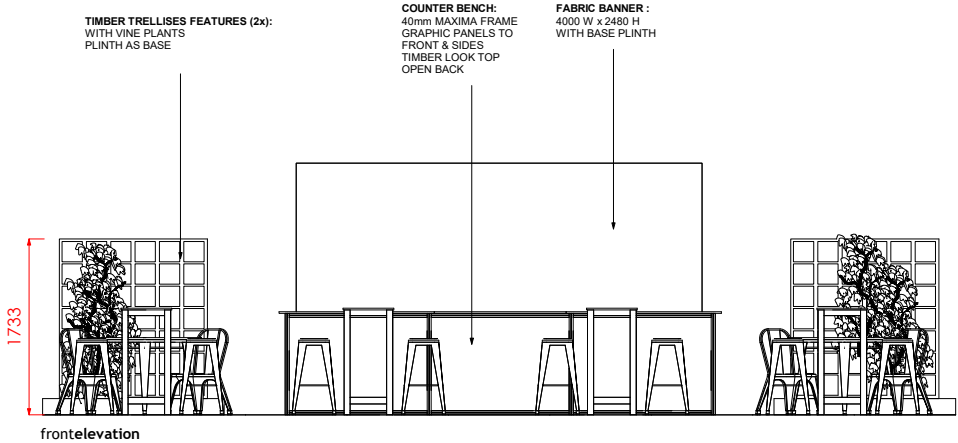
- Structure including carpet
 - Furniture
 - Electrical
 - Signage
 - Damage Waiver
- = \$8,660 + GST**

** plants are not included and will be an additional cost*



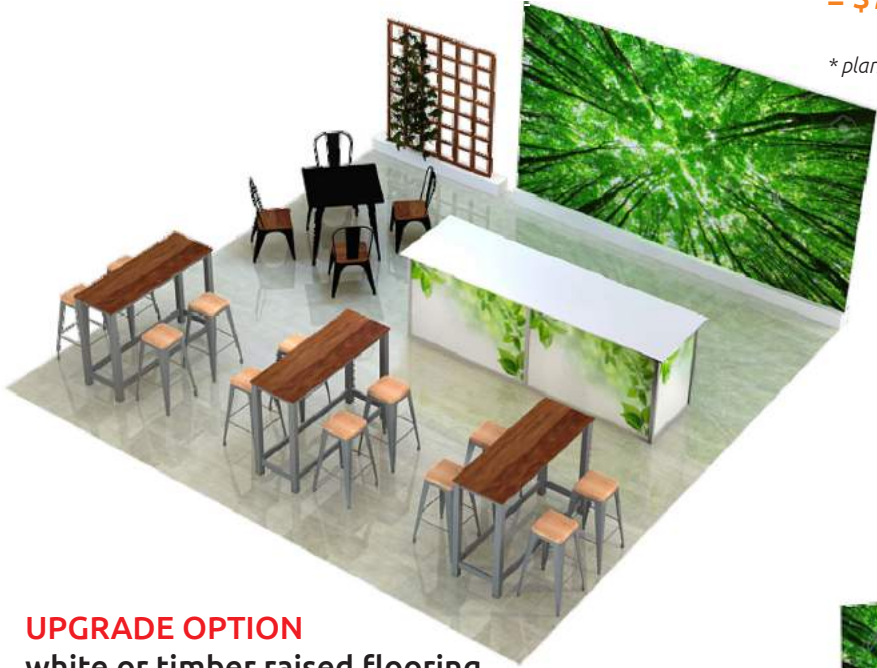
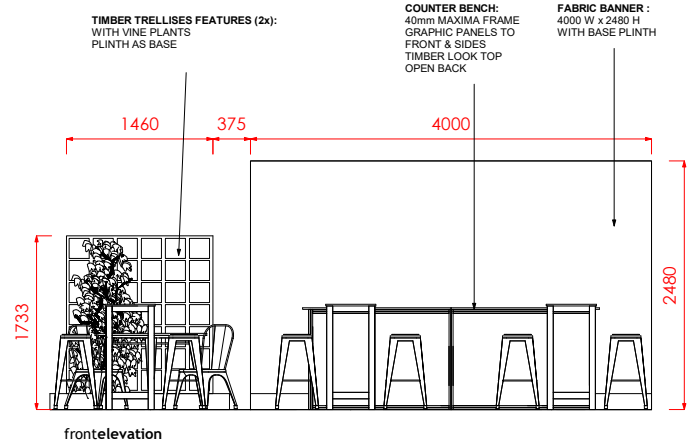
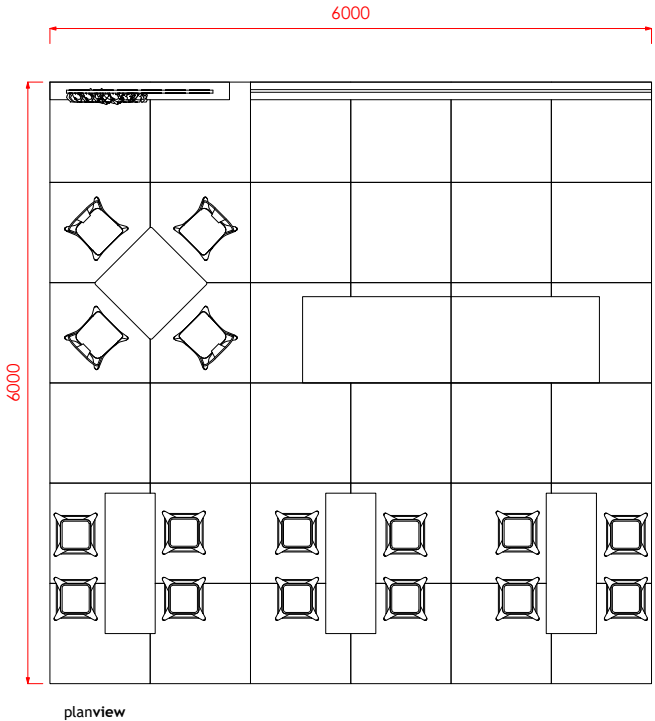
planview

TIMBER LOOK FLOORING:
2m VINYL (CARPET OPTIONAL)



UPGRADE OPTION
white or timber raised flooring
additional cost of
\$1,890 + GST

Option 6b: Island Eco 6x6



- Structure including carpet
 - Furniture
 - Electrical
 - Signage
 - Damage Waiver
- = \$7,340 + GST**

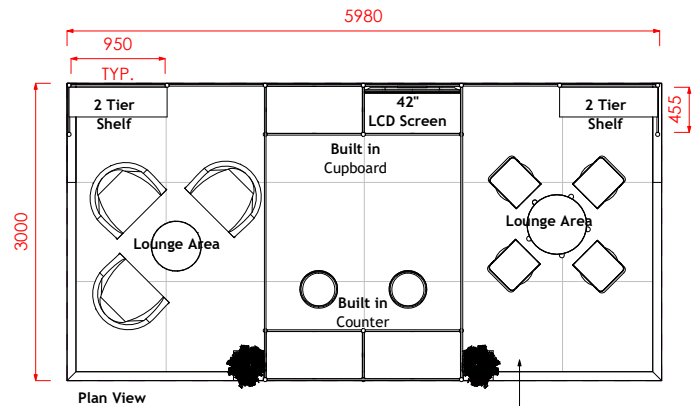
** plants are not included and will be an additional cost*

Furniture Schedule	
Description	Count
Industrial Bench	3
Tolix Bar Stool - Timber Seat	12
Tolix Chair with Timber Top	4
Tolix Table Black	1

UPGRADE OPTION
white or timber raised flooring
additional cost of
\$1,260 + GST



Option 7: Peninsular Stand 6x3



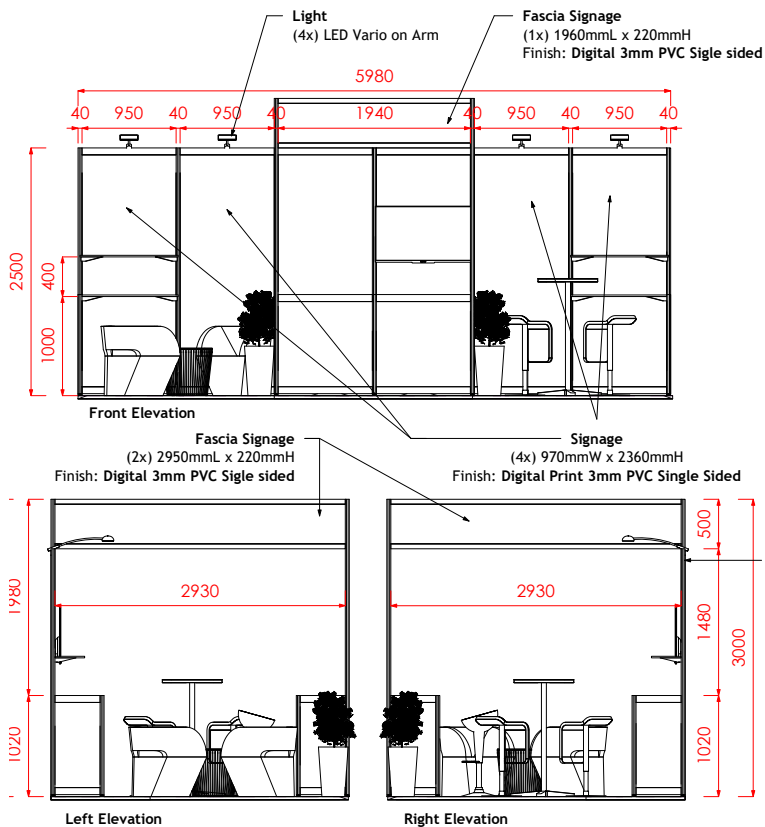
Furniture Schedule	
Description	Count
42" LCD Screen - Sizing Varies in each state	1
900mm High Plant w Wedge Pot	2
Cage Coffee Table - White Top	1
Diva Bar Stool White	2
Euro Bar Table White	1
Regent Bar Stool White	4
Style Lounge White	3

- Structure including carpet
 - Furniture
 - Electrical
 - Signage
 - Audio Visual
 - Damage Waiver
- = \$3,946 + GST**

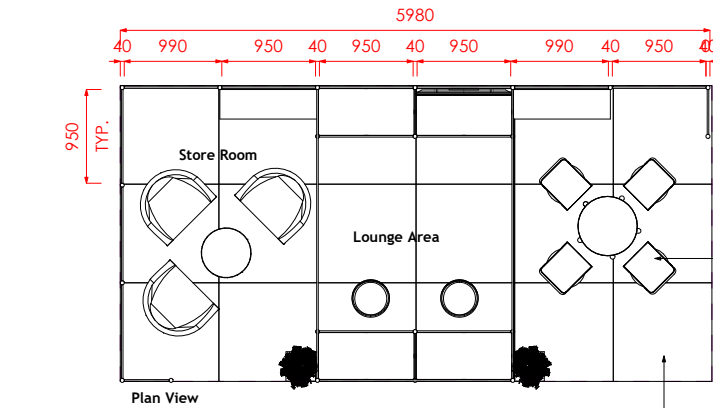
**plants are not included and will be an additional cost*

Construction
(1x) Octanorm with White Infill Panels
Finish: White

UPGRADE OPTION
white or timber raised flooring
additional cost of
\$630 + GST



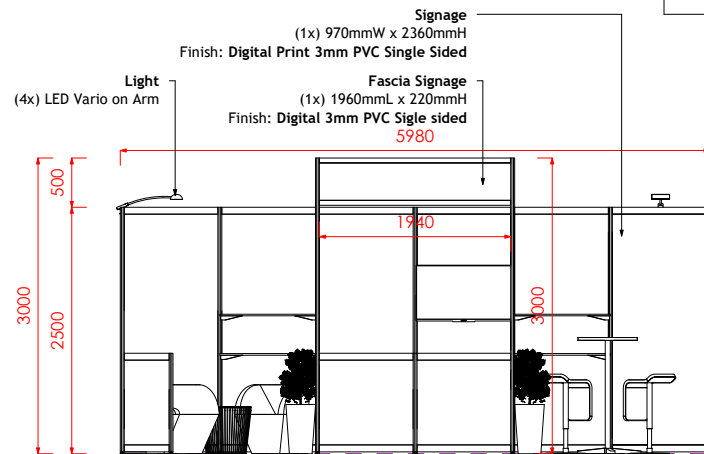
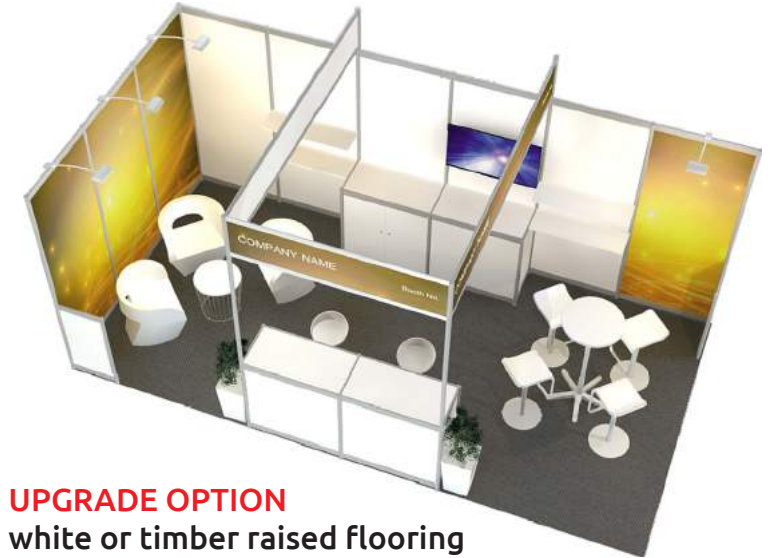
Option 7: Corner Stand 6x3



Furniture
 (3x) Style Lounge (White)
 (1x) Oasis Coffee Table (White)
 (2x) Diva Bar Stool (White)
 (2x) Wedge Pot (Plants)
 (4x) Regent Bar Stool (White)
 (1x) Euro Bar Table (White)

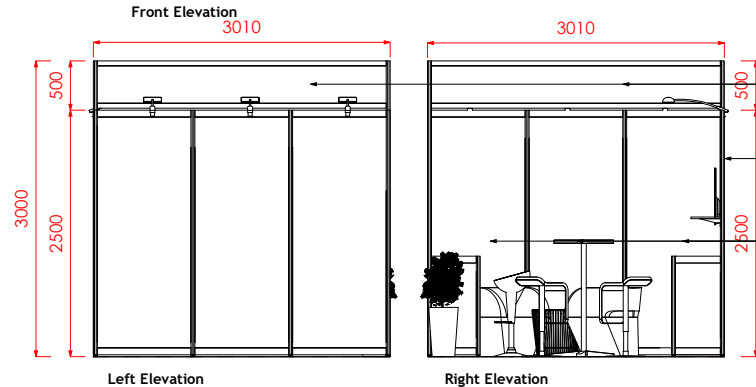
Flooring (Carpet)

- Structure including carpet
- Furniture
- Electrical
- Signage
- Audio Visual
- Damage Waiver

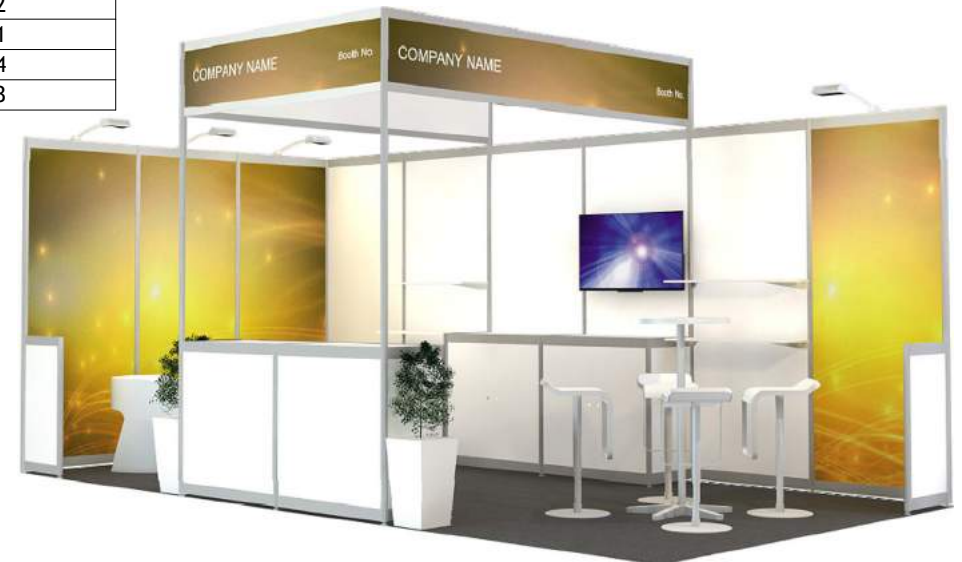


Furniture Schedule

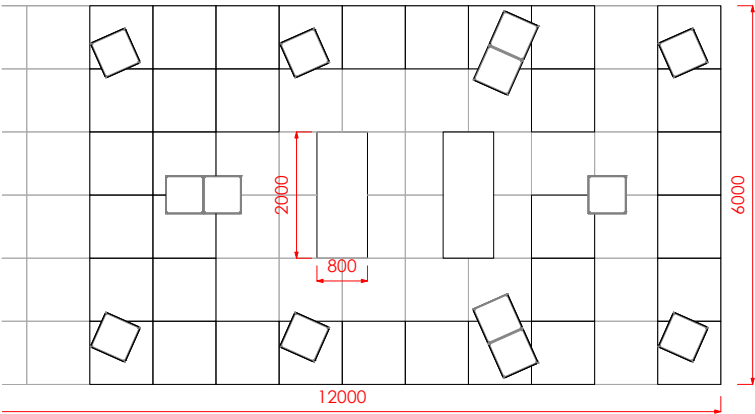
Description	Count
42" LCD Screen - Sizing Varies in each state	1
900mm High Plant w Wedge Pot	2
Cage Coffee Table - White Top	1
Diva Bar Stool White	2
Euro Bar Table White	1
Regent Bar Stool White	4
Style Lounge White	3



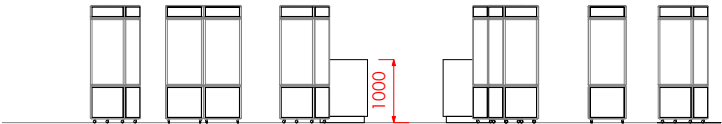
UPGRADE OPTION
 white or timber raised flooring
 additional cost of
\$630 + GST



Option 8a: Peninsular Showcase 12x6



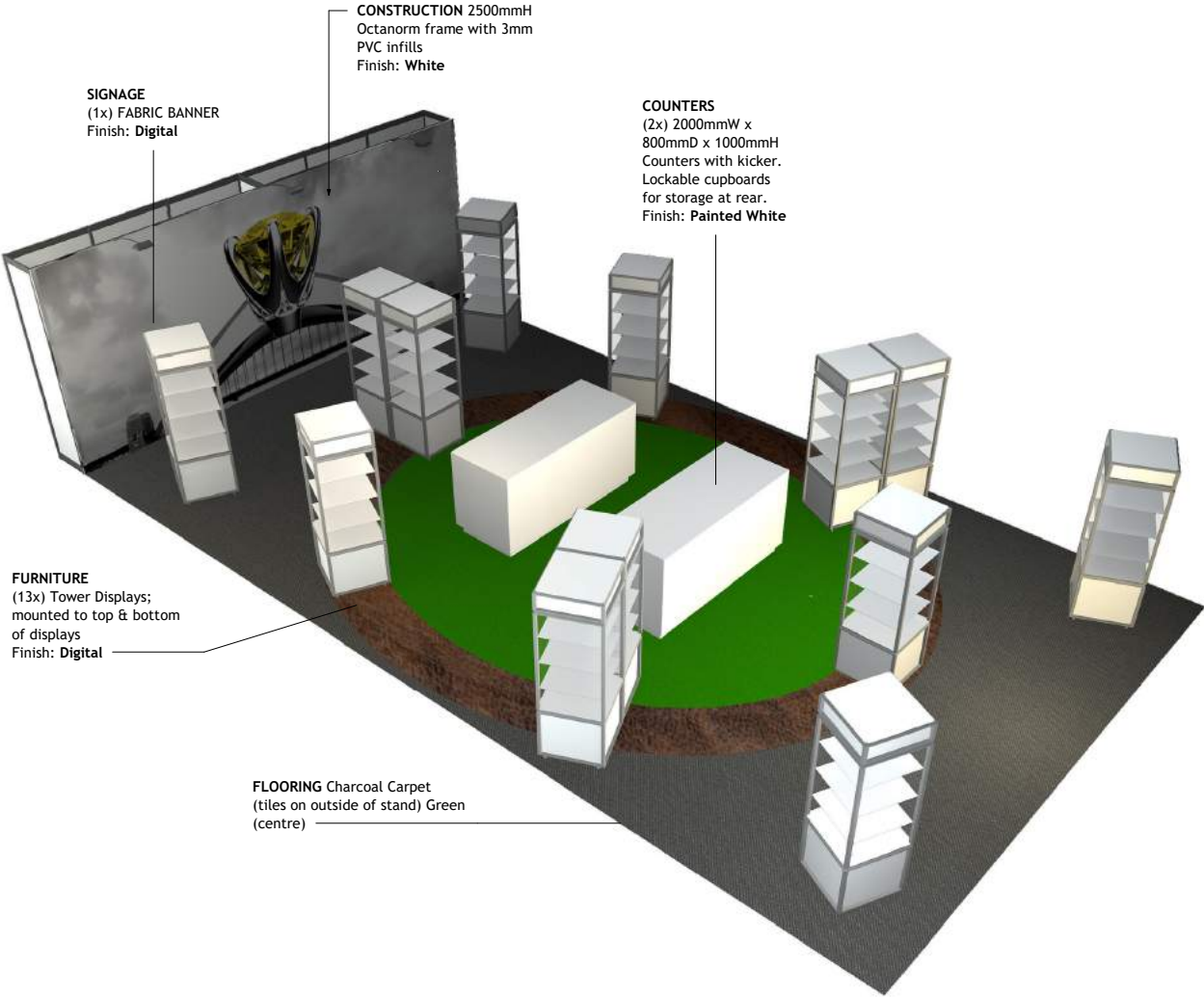
planview



elevation

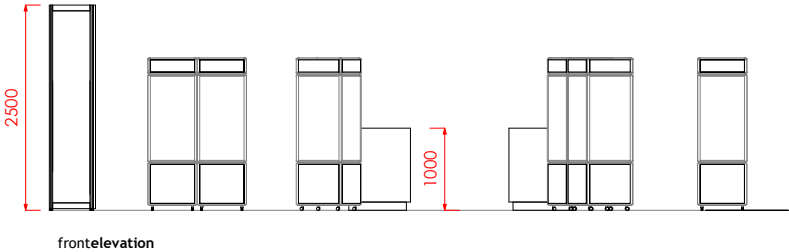
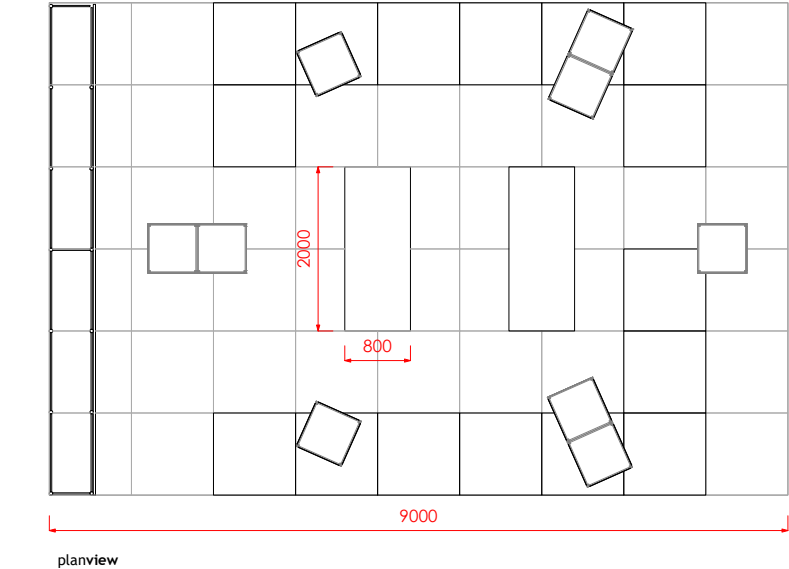
Furniture Schedule	
Description	Count
Showcase Executive Tower	13

- Structure including carpet
 - Furniture
 - Electrical
 - Signage
 - Damage Waiver
- = \$10,400 + GST



Option 8b: Peninsular Showcase 9x6

- Structure including carpet
 - Furniture
 - Electrical
 - Signage
 - Damage Waiver
- = \$8,500 + GST



SIGNAGE
(1x) FABRIC BANNER
Finish: Digital

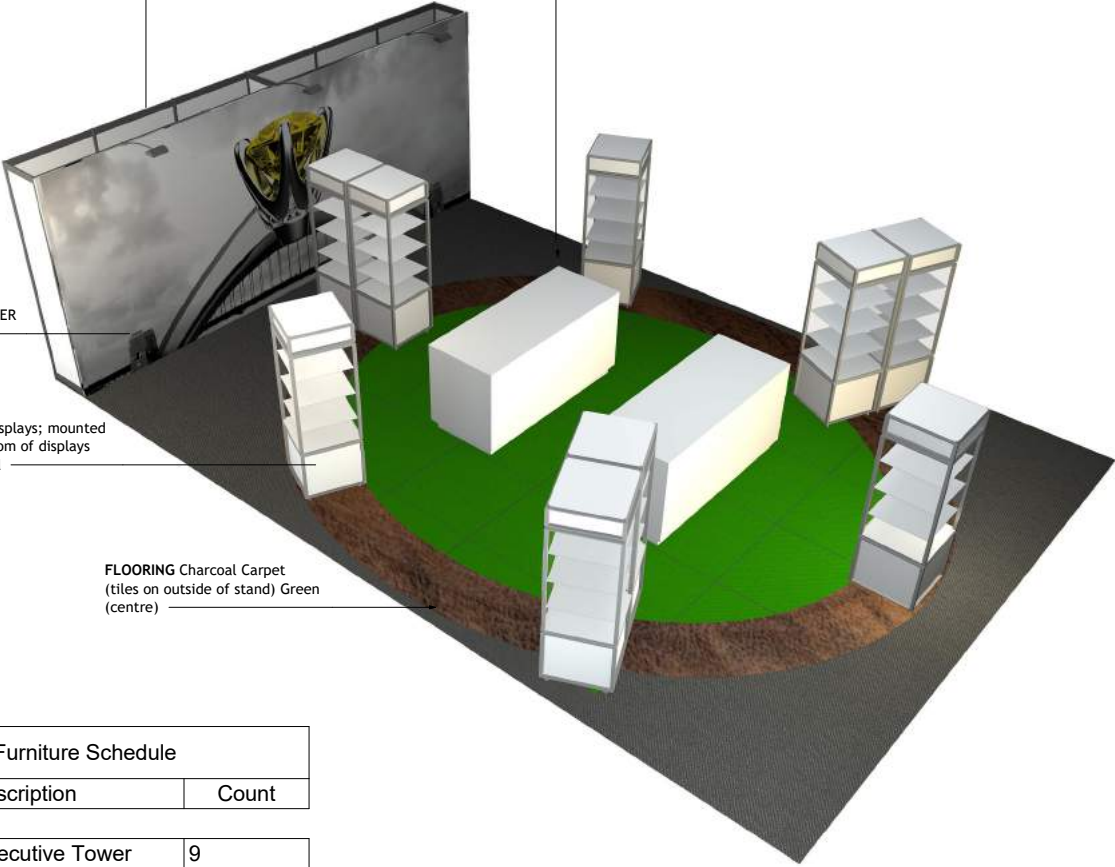
FURNITURE
(9x) Tower Displays; mounted
to top & bottom of displays
Finish: Digital

FLOORING Charcoal Carpet
(tiles on outside of stand) Green
(centre)

CONSTRUCTION 2500mmH
Octanorm frame with 3mm
PVC infills
Finish: White

COUNTERS
(2x) 2000mmW x
800mmD x 1000mmH
Counters with kicker.
Lockable cupboards
for storage at rear.
Finish: Painted White

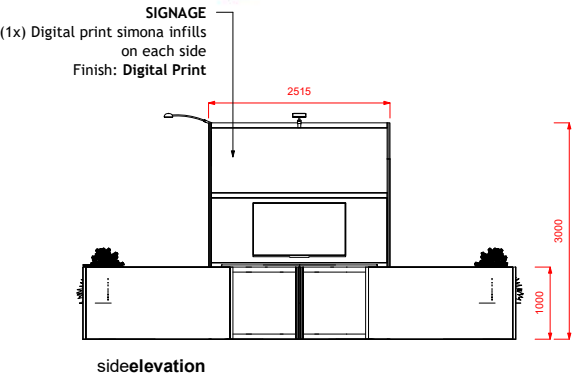
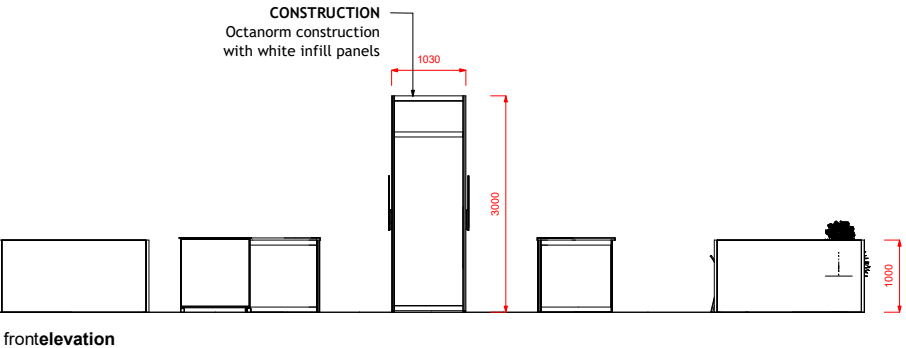
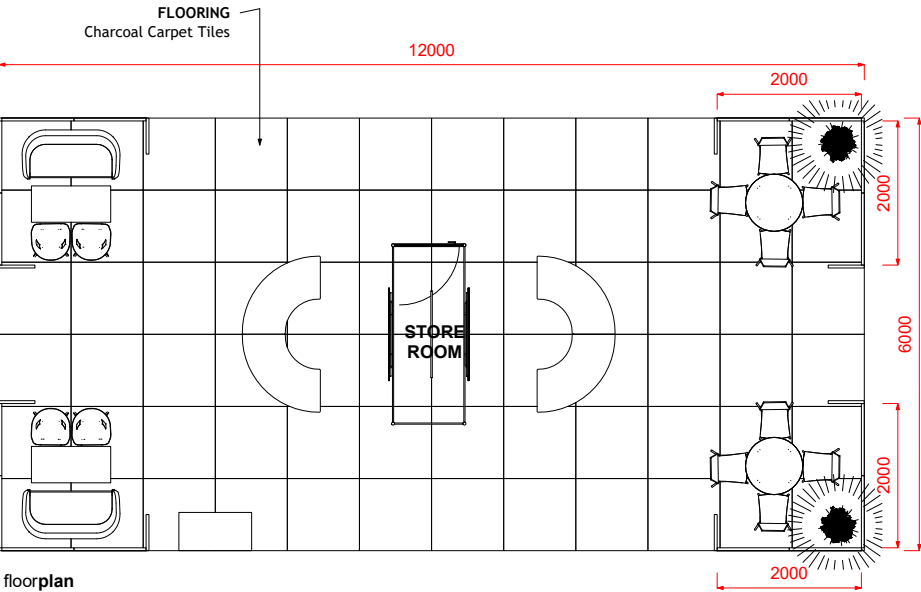
Furniture Schedule	
Description	Count
Showcase Executive Tower	9



Option 9a: Island Concierge Open 12x6

- Structure including carpet
 - Furniture
 - Electrical
 - Signage
 - Audio Visual
 - Damage Waiver
- = \$10,820 + GST

* plants are not included and will be an additional cost

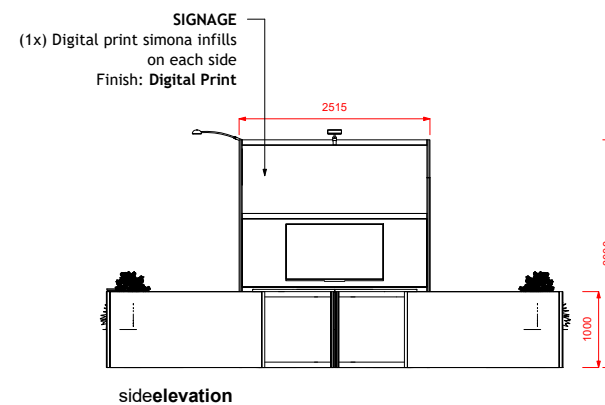
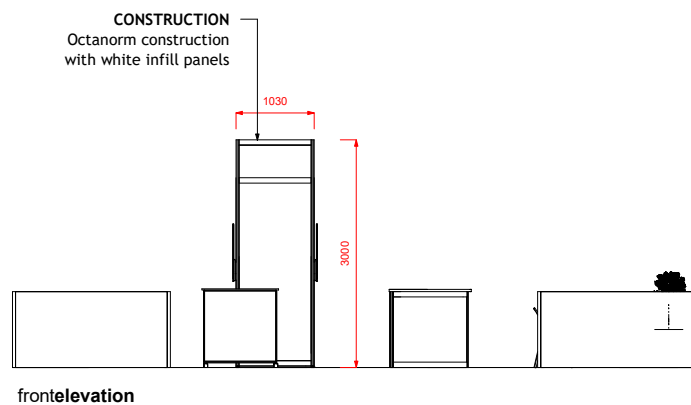
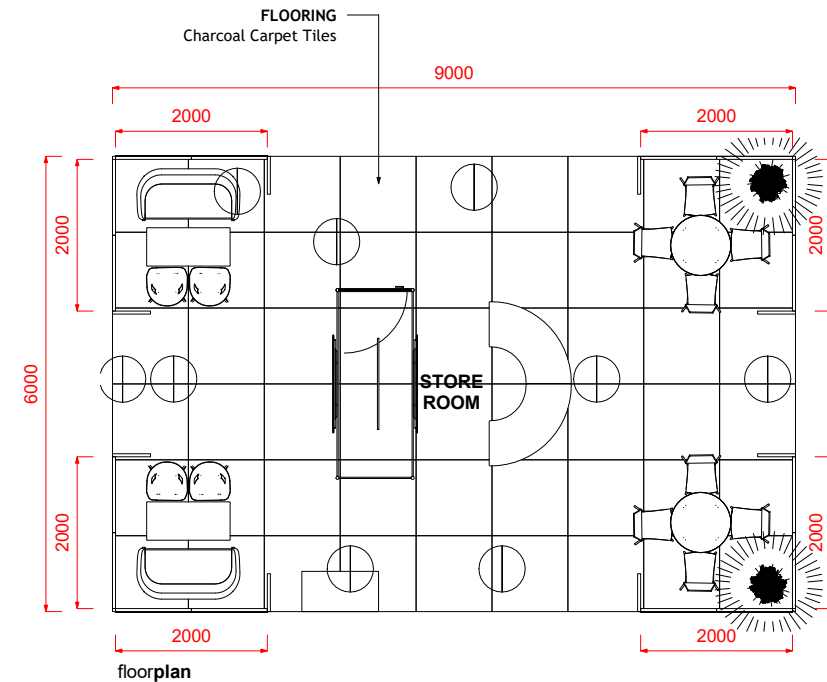


Furniture Schedule	
Description	Count
55" LCD Screen	2
1200mm High Plant w Wedge Pot	2
Carlo Bimbi Lounge - Two Seater	2
Euro Registration Counter White	4
Euro Table White	2
Nova Coffee Table - Timber	2
Regent Registration Counter Black	1
Uni Chair - Red	8
Uni Ka Chair White	4

Option 9b: Island Concierge Open 9x6

- Structure including carpet
 - Furniture
 - Electrical
 - Signage
 - Audio Visual
 - Damage Waiver
- = \$7,420 + GST**

* plants are not included and will be an additional cost



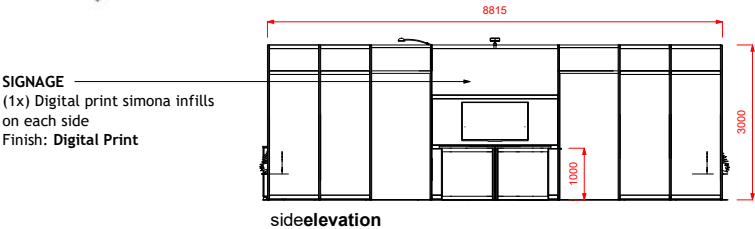
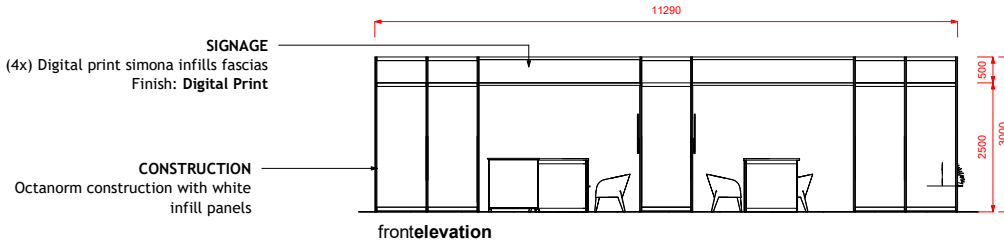
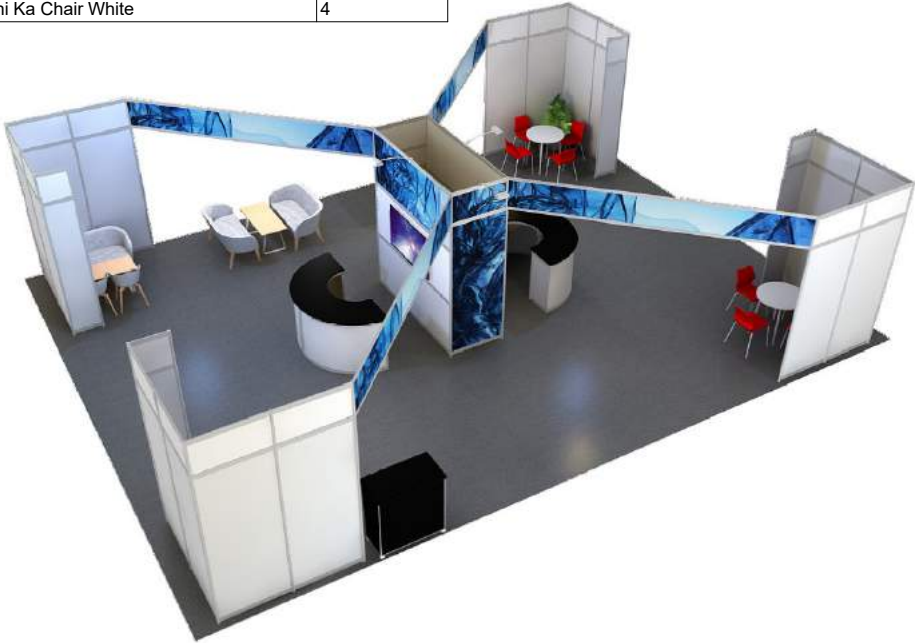
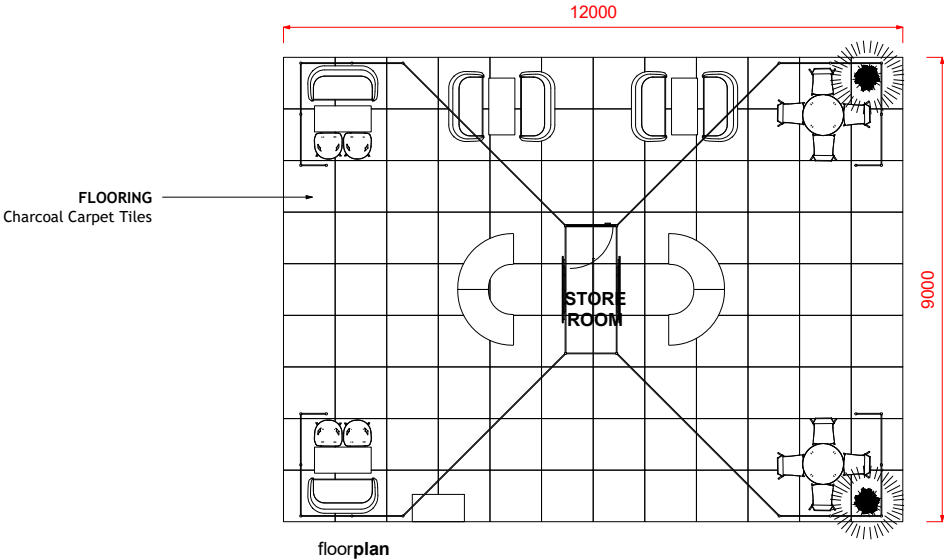
Furniture Schedule	
Description	Count
55" LCD Screen	2
1200mm High Plant w Wedge Pot	2
Carlo Bimbi Lounge - Two Seater	2
Euro Registration Counter White	2
Euro Table White	2
Nova Coffee Table - Timber	2
Regent Registration Counter Black	1
Uni Chair - Red	8
Uni Ka Chair White	4

Option 10: Island Concierge with banners 12x6

- Structure including carpet
 - Furniture
 - Electrical
 - Signage
 - Audio Visual
 - Damage Waiver
- = \$13,780 + GST

* plants are not included and will be an additional cost

Furniture Schedule	
Description	Count
55" LCD Screen	2
1200mm High Plant w Wedge Pot	2
Carlo Bimbi Lounge - Two Seater	6
Euro Registration Counter White	4
Euro Table White	2
Nova Coffee Table - Timber	4
Regent Registration Counter Black	1
Uni Chair - Red	8
Uni Ka Chair White	4



Option 11a: Island Hospitality with banners 12x6

- Structure including carpet
 - Furniture
 - Electrical
 - Signage
 - Damage Waiver
- = \$25,310 + GST

SIGNAGE
(1x) Rigged reframe banner cube
Finish: Digital Graphics

SIGNAGE
3mm Graphic infill panels in maxima frame in top section of store room
Finish: Digital Graphics

STRUCTURE
80mm Maxima frame structure
Finish: Hire Item

SIGNAGE
Reframe banner in maxima frame
Finish: Digital Graphics

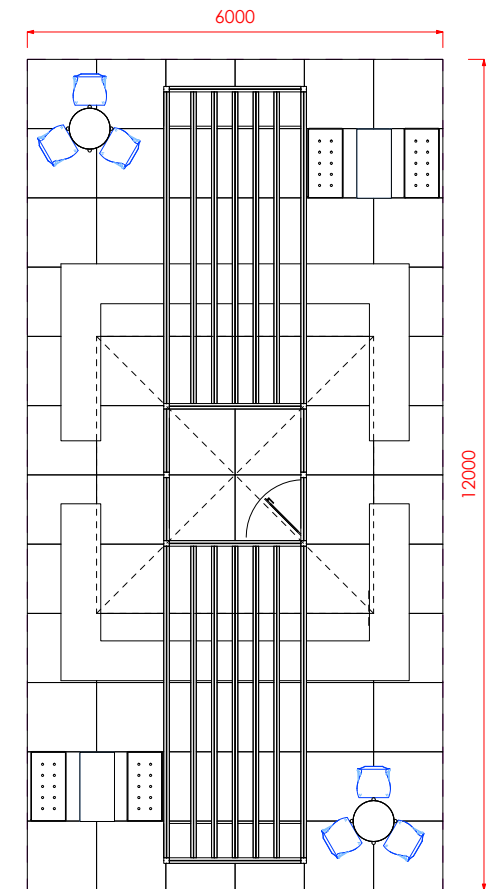
FURNITURE
Bar table with High chairs
Finish: Hire Item

FURNITURE
Ottomann lounge setting
Finish: Hire Item

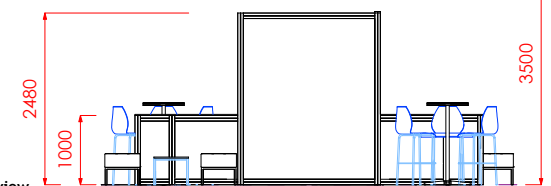
COUNTER
(2x) Maxima frame serving bar counter with digital graphics on front face
Finish: Digital Graphics

FLOORING
(1x) 12000W x 6000D Carpet Tiles
Finish: Hire Item

perspective view



planview



front view

Option 11b: Island Hospitality with banners 9x6

- Structure including carpet
 - Furniture
 - Electrical
 - Signage
 - Damage Waiver
- = \$21,000 + GST**

Furniture Schedule	
Description	Count
Alusi Ottoman Package White	1
Expo Bar Package Blue	1



SIGNAGE
(1x) Rigged reframe banner cube
Finish: Digital Graphics

SIGNAGE
3mm Graphic infill panels in maxima frame in top section of store room
Finish: Digital Graphics

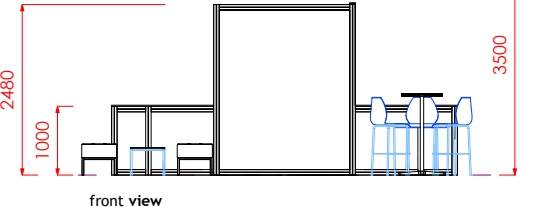
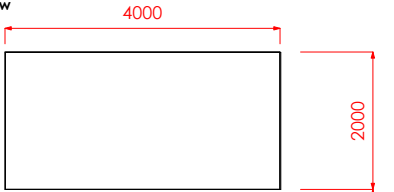
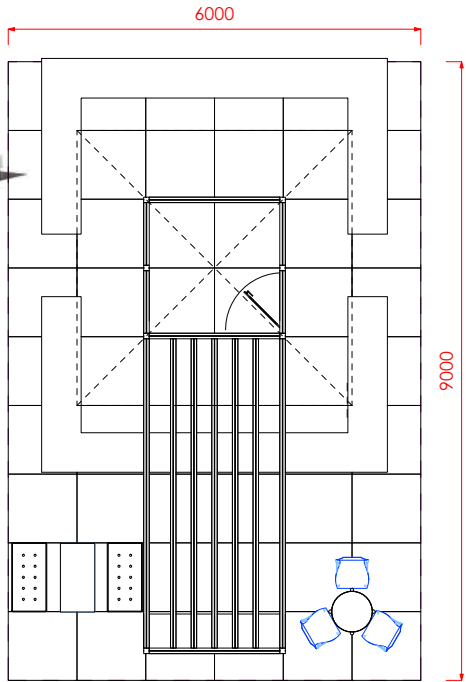
STRUCTURE
80mm Maxima frame structure
Finish: Hire Item

SIGNAGE
Reframe banner in maxima frame
Finish: Digital Graphics

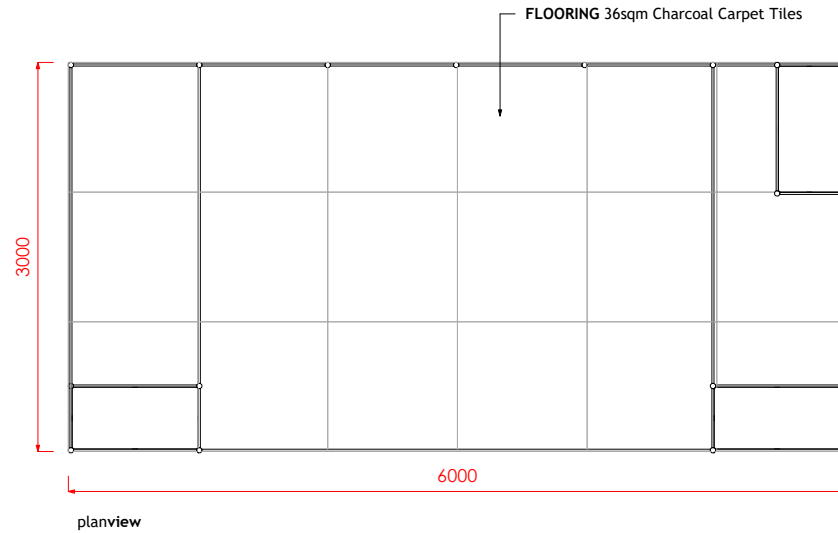
FURNITURE
Bar table with High chairs
Finish: Hire Item

COUNTER
(2x) Maxima frame serving bar counter with digital graphics on front face
Finish: Digital Graphics

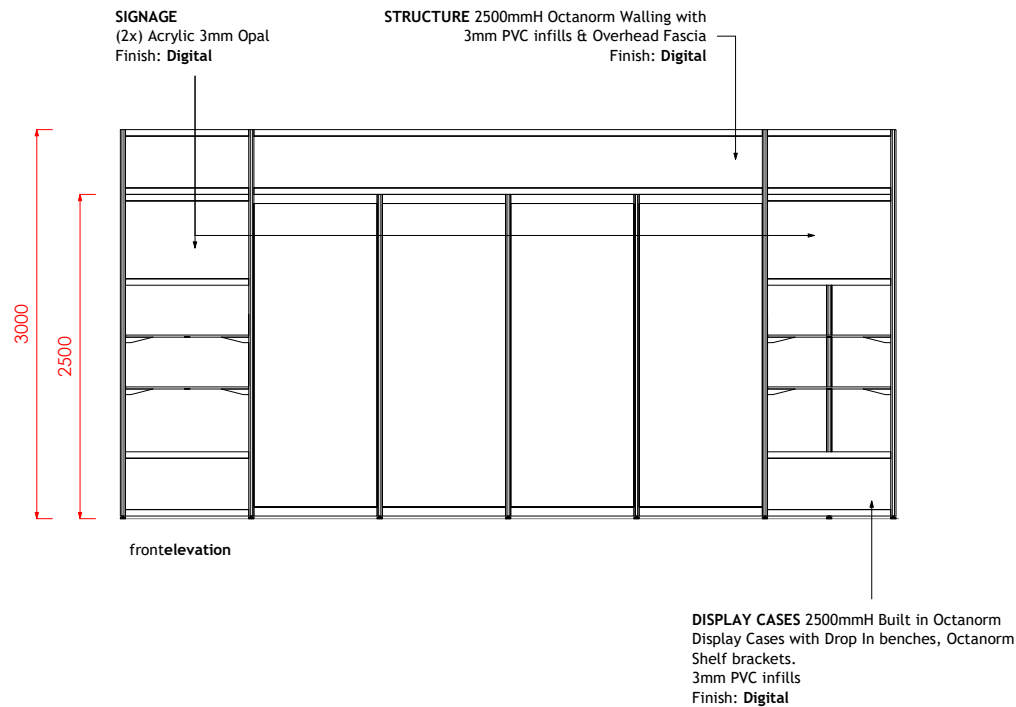
FLOORING
(1x) 12000W x 6000D Carpet Tiles
Finish: Hire Item



Option 12a: Peninsular Display 6x3

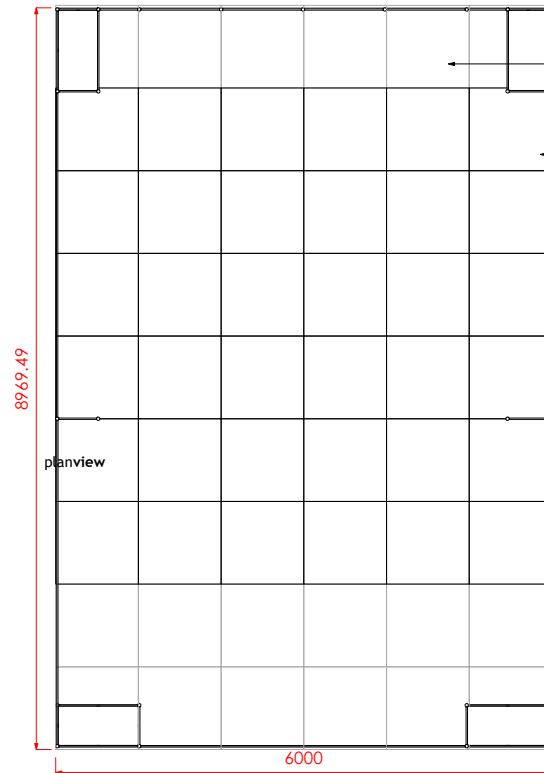


- Structure including carpet
 - Furniture
 - Electrical
 - Signage
 - Damage Waiver
- = \$6,425 + GST



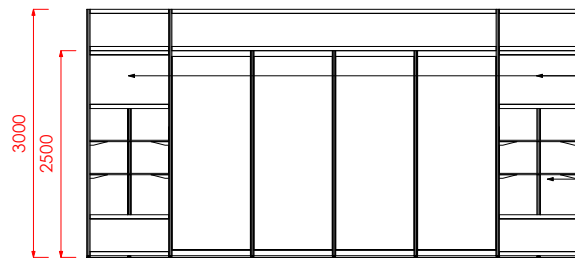
Option 12b: Peninsular Display 9x6

- Structure including carpet
 - Furniture
 - Electrical
 - Signage
 - Damage Waiver
- = \$8,600 + GST**



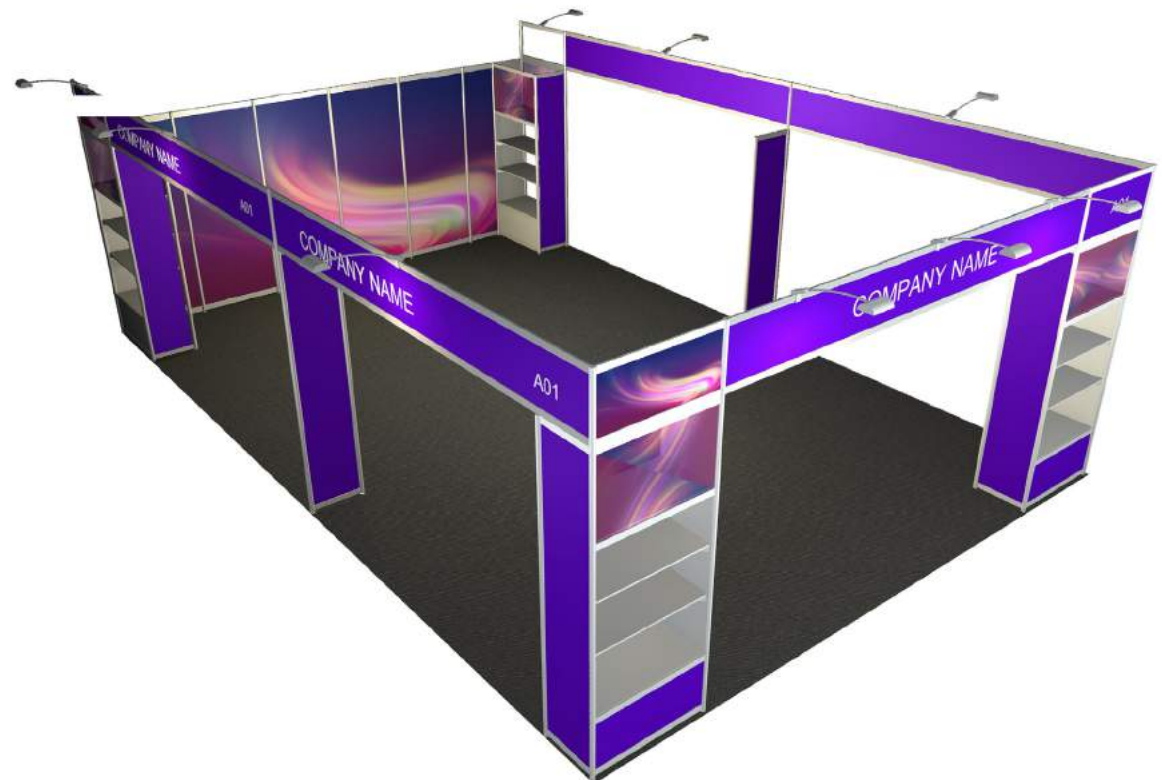
FLOORING 54sqm Charcoal Carpet Tiles

STRUCTURE 2500mmH Octanorm Walling with
3mm PVC infills & Overhead Fascia
Finish: Digital

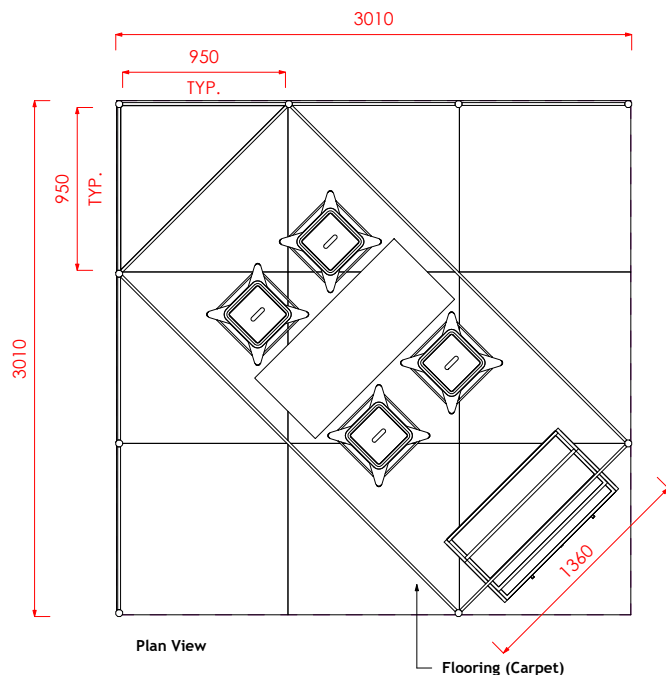


SIGNAGE
(8x) Acrylic 3mm Opal
Finish: Digital

DISPLAY CASES 2500mmH Built in Octanorm
Display Cases with Drop In benches, Octanorm
Shelf brackets.
3mm PVC infills
Finish: Digital



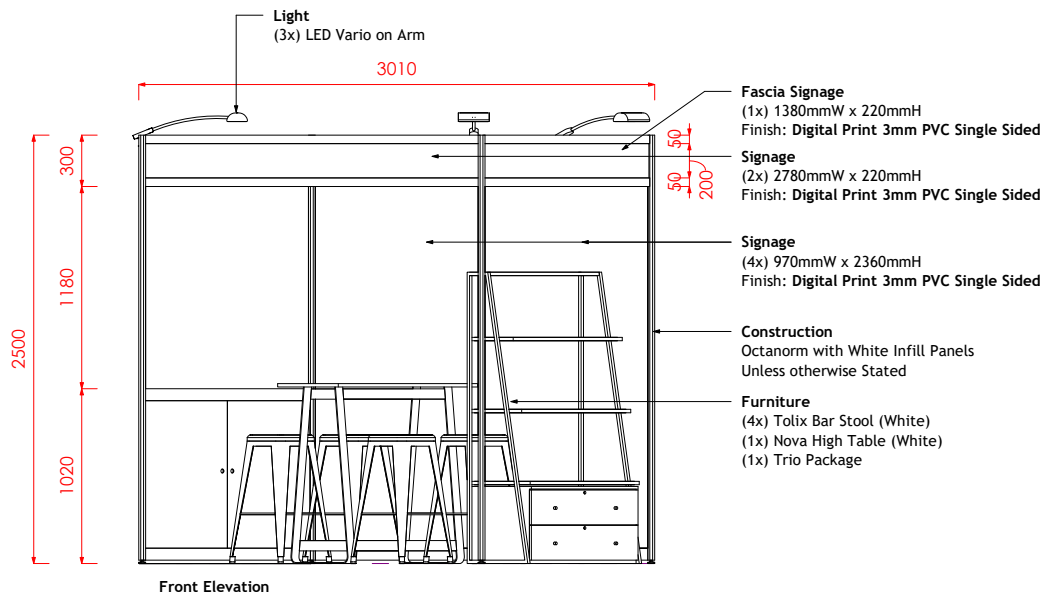
Option 13a: Corner Stand 3x3



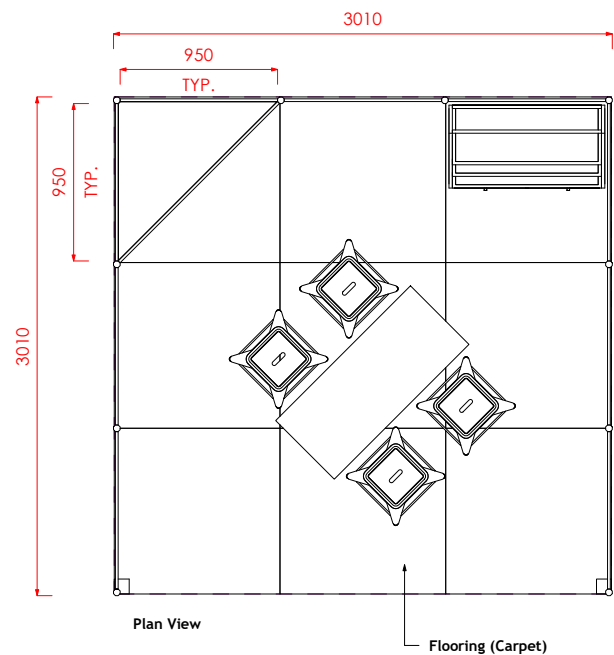
- Structure including carpet
 - Furniture
 - Electrical
 - Signage
 - Damage Waiver
- = \$2,533 + GST

Furniture Schedule	
Description	Count
Nova High Table - White	1
Tolix Bar Stool - Gloss White	4
Trio Package White	1

UPGRADE OPTION
white or timber raised flooring
additional cost of
\$315 + GST



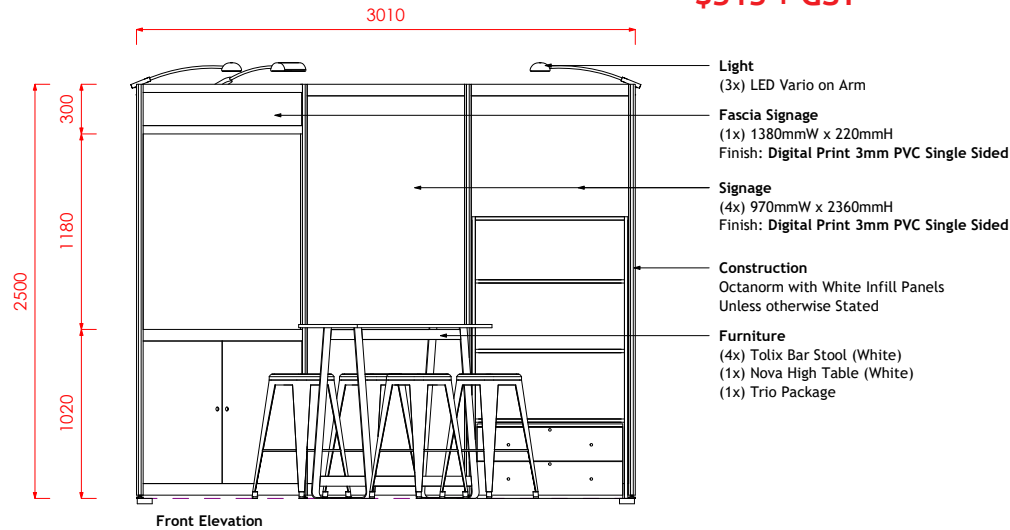
Option 13a: Inline Stand 3x3



- Structure including carpet
 - Furniture
 - Electrical
 - Signage
 - Damage Waiver
- = \$2,434 + GST

Furniture Schedule	
Description	Count
Nova High Table - White	1
Tolix Bar Stool - Gloss White	4
Trio Package White	1

UPGRADE OPTION
white or timber raised flooring
additional cost of
\$315 + GST



Delivering unique
experiences beyond
expectation.



**EXPERTISE
EVENTS**

experience shows

